



Superior Safety Record Pre-qualified  
with Avetta, Veriforce & ISN

Fabrication

Machining

Field Services

Design Engineering

Plate/Structural Forming

Specialty Coatings



Oil & Chemical



Mining



Power



Water & More

myGBI.com

(435) 538-1250

## FABRICATION AND MACHINING

GBI's experienced craftsmen have been building America with *EPIC Safety & Quality* since 2007. We deliver a single source for steel fabrication, machining and paint needs from our facility in Plymouth, Utah. GBI's disciplined project management and communications help ensure your project is completed on-time and on budget.



GBI Fabrication & Machining

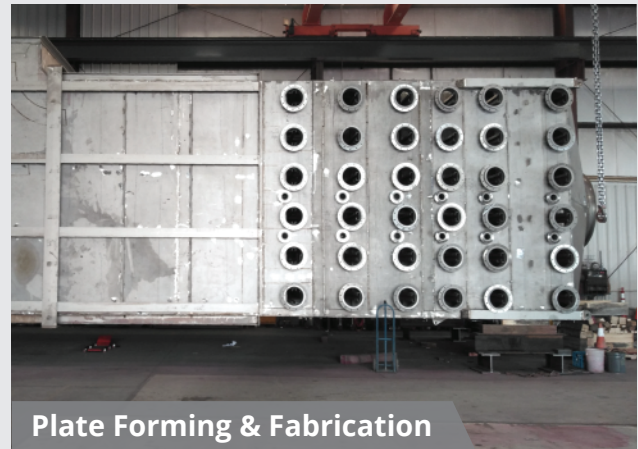


Plate Forming & Fabrication



Plate & Structural Steel Fabrication and Erection



Safety

Quality

Experience

People

Integrity

Competitive

## FABRICATION AND MACHINING

### Shop Equipment & Specifications

- 60,000 Square Feet Under Hook
- 4 Buildings
- 30' Hook Height
- 1" x 10' Hydraulic Plate Rolls
- 5/8" x 5' Hydraulic Plate Rolls
- 400 Amp HD Plasma w/ 16' x 88' Table
- (2) 20-Ton & (5) 10-Ton Overhead Cranes
- 400 Ton x 12' Brake
- 100 Ton x 10' Brake
- 100 Ton x 10' CNC Shear
- Multiple Band Saws up to 30" x 20"
- R5 Round Shape Rolls
- (30) Welders (FCAW, SAW, GTAW, SMAW, GMAW)
- (2) Iron Workers
- Turning Rolls and Positioners
- CNC Machining up to X-98" x Y-50" x Z-42"
- Enclosed Sandblast Booth
- Paint Booth

**Products** GBI fabricates, ships, installs and repairs a wide range of products.

- |                    |              |
|--------------------|--------------|
| • Storage Tanks    | • Towers     |
| • Pressure Vessels | • Stacks     |
| • Piping           | • Reactors   |
| • Structural Steel | • Hoppers    |
| • Duct Work        | • Bins       |
| • Stairs & Railing | • Furnaces   |
| • Nozzles          | • Custom Fab |
| • Manways          | • Shut Downs |

**Quality** GBI Designs and builds all steel and alloy work according to highest industry standards.

#### CODES

- ASME
- API 650, 620
- AWWA
- CWB
- NFPA
- AWS

#### MATERIALS

- Carbon Steel
- Hastelloy C276
- Duplex 2205
- Monel 400
- Stainless Steel



Plate Steel Forming & Fabrication



Shop Tanks



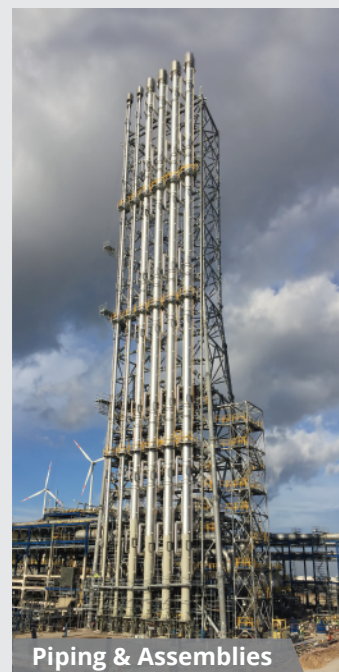
Towers



Technical Finishing



Modular Structural



Piping & Assemblies